

BrewBench Stick Plus

User Manual

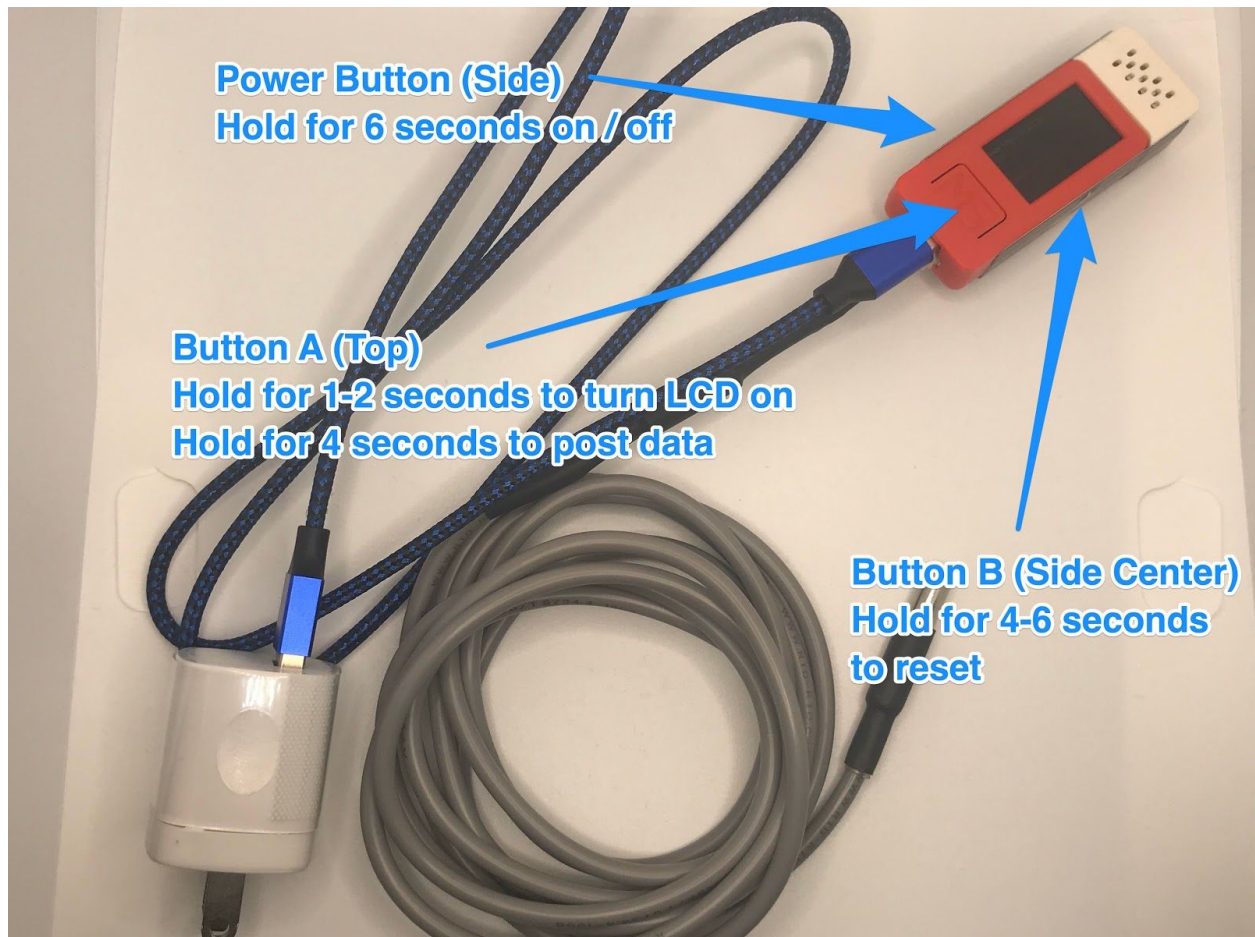
BT-1001



- Temperature (Probe)
- Ambient Temperature
- Humidity

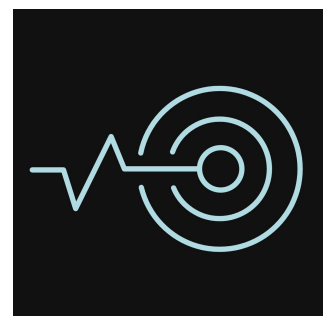
Great for your brew house, barrel room, keg room, walk in cooler, refrigerator, glycol or fermenters.

Sensor Buttons



Sensor App

Download the app to configure the sensor.
<https://www.brewbench.com>



Sensor Specifications

ESP32	240MHz dual core, 600 DMIPS, 520KB SRAM, Wi-Fi, dual mode Bluetooth
Flash Memory	4MB
Power Input	5V @ 500mA
LCD screen	1.14 inch, 135*240 Colorful TFT LCD, ST7789v2
Battery	120 mAh @ 3.7V
Operating Temperature	32°F to 104°F (0°C to 40°C)
net weight	15g
Gross weight	21g
Product Size	48.2*25.5*13.7mm

Case Material	Plastic (PC) NOT WATERPROOF
Temperature Probe	<p>6 ft (2m) One Wire Temperature Sensor - DS18B20</p> <ul style="list-style-type: none"> • Wide temperature range: -67°F to 257°F (-55°C to +125°C) • High accuracy: ±0.5°C 14°F to 185°F (-10°C to +85°C) • WATERPROOF But cannot be put under temperature higher than 158°F (70°C) for a long time
Ambient Temperature	Range: -40°F to 248°F (-40°C to 120°C)
Humidity	Range: 10 to 90 %RH