

# BrewBench Stick

User Manual

BT-1000

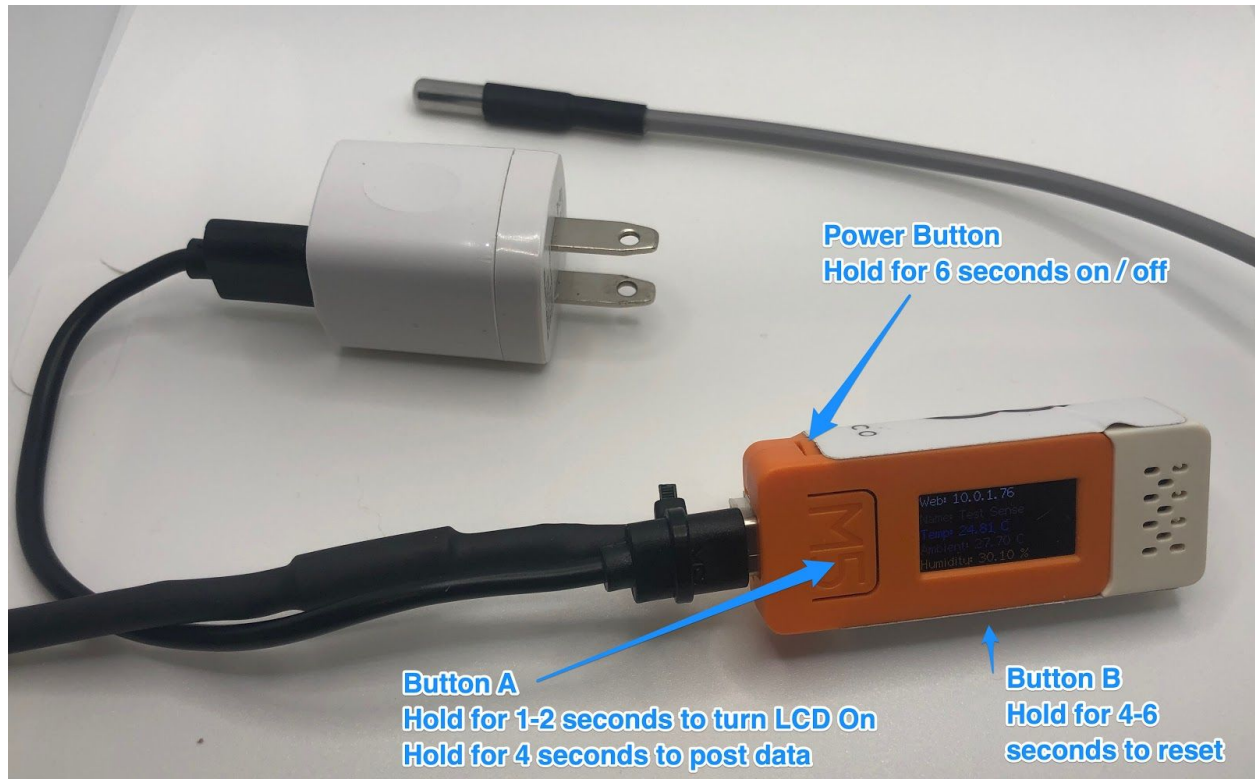


- Temperature (Probe)
- Ambient Temperature
- Humidity

Great for your brew house, barrel room, keg room, walk in cooler, refrigerator, glycol or fermenters.

---

## Sensor Buttons



## Sensor App

Download the app to configure the sensor.

<https://www.brewbench.com>



## Sensor Specifications

ESP32	240MHz dual-core, 600 DMIPS, 520KB SRAM, Wi-Fi, dual-mode Bluetooth
Flash Memory	4MB
Power Input	5V @ 500mA
LCD screen	0.96 inch, 80*160 Colorful TFT LCD, ST7735S
Battery	95 mAh @ 3.7V
Operating Temperature	32°F to 104°F ( 0°C to 40°C )
net weight	15.1g
Gross weight	33g
Product Size	48.2*25.5*13.7mm

Package Size	55*55*20mm
Case Material	Plastic ( PC ) <b>NOT WATERPROOF</b>
Temperature Probe	<p>6 ft (2m) One Wire Temperature Sensor - DS18B20</p> <ul style="list-style-type: none"> <li>• Wide temperature range: -67°F to 257°F ( -55°C to +125°C )</li> <li>• High accuracy: ±0.5°C 14°F to 185°F ( -10°C to +85°C )</li> <li>• <b>WATERPROOF</b> But cannot be put under temperature higher than 158°F (70°C) for a long time</li> </ul>
Ambient Temperature	Range: -4°F to 140°F ( -20°C to 60°C )
Humidity	Range: 20 to 95 %RH